

DATASHEET

e-SolarMark+ Light PET CO2 Laser Coding System

The Matthews e-SolarMark+ Light CO2 laser coding systems are ideal for coding a high quality, contrasting mark onto PET materials, such as beverage containers and clam shell produce containers. Also ideal for glass substrates, e-SolarMark+ cleanly marks alphanumeric text, date/time codes, serial numbers, barcodes, 2D codes and graphics.

Matthews' laser coding systems provide many interface options to connect to remote devices such as PLCs, packaging equipment, and material handling equipment. Our lasers have the greatest focal distance, allowing the laser to be mounted farther away from production lines. There are two control interface models (network, or 15" color touchscreen) and Matthews provides message design software with every laser system purchased.

e-SolarMark+ Light – 9.3um Wavelength

Laser Output Power

- 20W and 45W

Electrical Requirements

- 115V 60Hz/230V 50Hz (auto adjustable)

Power Consumption

- 20W: 700W, 45W: 1,300W

Cooling

- **Integrated Fans:** at ambient temperature 50–104°F (10–40°C) Up to 100% of laser duty cycle
- **Water:** at ambient temperature 104–113°F (40–45°C) (IP65) Or in dirty, dusty, humid environment

Operating Environment

- Ambient temperature 50–104°F (10–40°C)
- Humidity up to 90% non-condensing

Enclosure Type

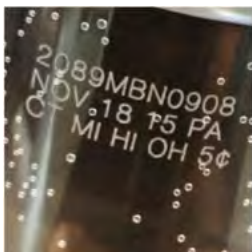
- IP52, NEMA 12/IP65, NEMA 4 (optional)

Dimensions and Weight

- **Control Units**
15.6" L x 12.6" W x 6.7" H
(395mm L x 320mm W x 170mm H)
22lb (10kg)
- **Marking Units**
27.5"–35.8" L x 5.5" W x 5.5" H
(700–910mm L x 140mm W x 140mm H)
33lb (15kg)

FEATURES

- + Vector quality, contrasting codes onto PET material and glass substrates
- + Remote Diagnostics
- + Permanent coding of text, date and time codes, serial numbers, barcodes and 2D codes, and graphics
- + Optional IP65 rated enclosure for washdown environments
- + Laser coding requires no ink/solvent consumables for a lower overall cost of ownership
- + Clean and eco-friendly coding system



Communication

- + USB/RS232/Ethernet 10 Base T
- + Input/output connector for: system interlocks, remote start/stop, ready, marking, status signals, and remote key switch connection, fume extractor communication, 15 configurable user inputs/outputs
- + SolPro job edition software available for Windows XP, Windows 7
- + Remote diagnostics

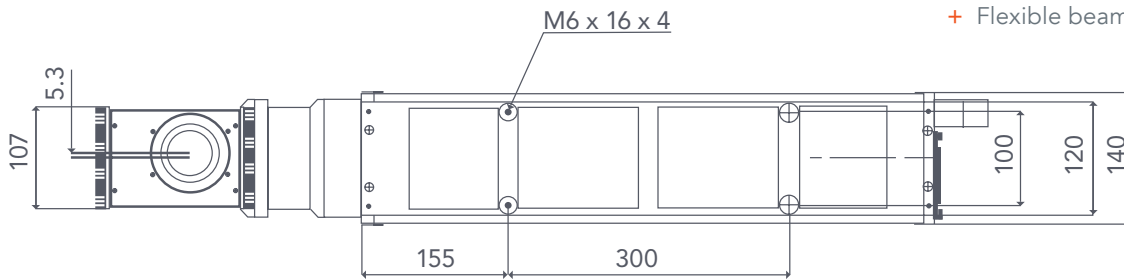
Languages

- + Language versions:

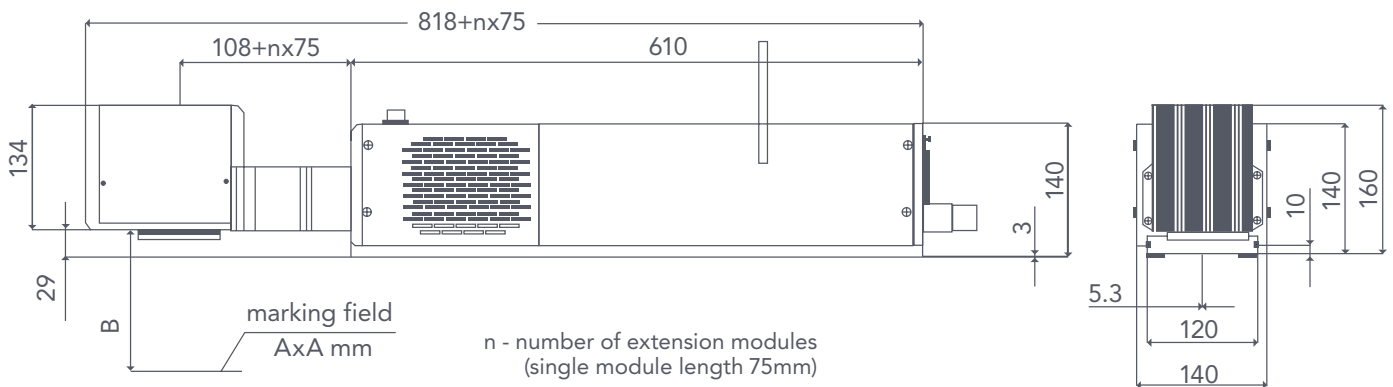
English	Italian
Chinese	Dutch
French	Polish
German	Swedish
Spanish	Portuguese

Options

- + Multiple user interface options (network, touchscreen)
- + IP65 enclosure
- + Scanning head mounting extension modules
- + Product detector and shaft encoder
- + Chiller for water-cooled systems (IP65)
- + Red laser pointer for marking position preview
- + Conduit extensions
- + Laser print position preview
- + Straight head laser beam output
- + Flexible beam delivery system



BOTTOM VIEW



All dimensions specified in millimeters unless otherwise noted.



ABOUT MATTHEWS MARKING SYSTEMS

Nordics | Mölndal, Sweden | O: +46 31 338 7900 | matthewsmarking.se

EMEA | Aschau, Germany | O: +49 8052 95110 | matthewsmarking.de

Americas | Pittsburgh, PA | O: +1800 775 7775 | matthewsmarking.com

APAC | Kuala Lumpur, Malaysia | O: +86 10 8879 6525 | matthewsmarking.cn